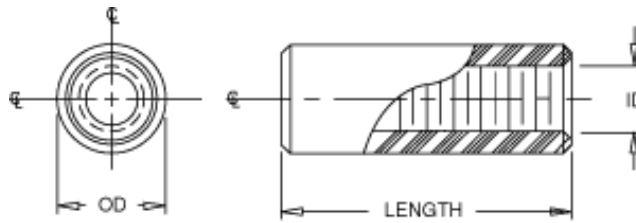


## Aluminum Round Standoffs

Aluminum standoffs provide a good compromise between weight and strength. Yellow Iridite plated.

- Alternative sizes and finishes are available in quantity.



| LENGTH | O.D. | THREAD |       |       |       |        |       |
|--------|------|--------|-------|-------|-------|--------|-------|
|        |      | #2-56  | #4-40 | #6-32 | #8-32 | #10-32 |       |
| .125   | 1/8  | 3/16   | 9394A | 9395A |       |        |       |
|        |      | 1/4    |       | 8320  | 8340  | 8360   |       |
|        |      | 5/16   |       |       | 9396A | 9397A  | 8380  |
|        |      | 3/8    |       |       |       | 9398A  | 9399A |
| .187   | 3/16 | 3/16   | 9394B | 9395B |       |        |       |
|        |      | 1/4    |       | 9228  | 9235  | 9242   |       |
|        |      | 5/16   |       |       | 9396B | 9397B  | 9249  |
|        |      | 3/8    |       |       |       | 9398B  | 9399B |
| .250   | 1/4  | 3/16   | 9394C | 9395C |       |        |       |
|        |      | 1/4    |       | 8321  | 8341  | 8361   |       |
|        |      | 5/16   |       |       | 9396C | 9397C  | 8381  |
|        |      | 3/8    |       |       |       | 9398C  | 9399C |
| .312   | 5/16 | 3/16   | 9394D | 9395D |       |        |       |
|        |      | 1/4    |       | 9229  | 9236  | 9243   |       |
|        |      | 5/16   |       |       | 9396D | 9397D  | 9250  |
|        |      | 3/8    |       |       |       | 9398D  | 9399D |
| .375   | 3/8  | 3/16   | 9394E | 9395E |       |        |       |
|        |      | 1/4    |       | 8322  | 8342  | 8362   |       |
|        |      | 5/16   |       |       | 9396E | 9397E  | 8382  |
|        |      | 3/8    |       |       |       | 9398E  | 9399E |
| .437   | 7/16 | 3/16   | 9394F | 9395F |       |        |       |
|        |      | 1/4    |       | 9230  | 9237  | 9244   |       |
|        |      | 5/16   |       |       | 9396F | 9397F  | 9251  |
|        |      | 3/8    |       |       |       | 9398F  | 9399F |
| .500   | 1/2  | 3/16   | 9394G | 9395G |       |        |       |
|        |      | 1/4    |       | 8323  | 8343  | 8363   |       |
|        |      | 5/16   |       |       | 9396G | 9397G  | 8383  |
|        |      | 3/8    |       |       |       | 9398G  | 9399G |

|       |       |      |       |        |        |        |       |
|-------|-------|------|-------|--------|--------|--------|-------|
| .500  | 1/2   | 3/16 |       | 8323   | 8343   | 8363   |       |
|       |       | 5/16 |       |        | 9396G  | 9397G  | 8383  |
|       |       | 3/8  |       |        |        | 9398G  | 9399G |
| .562  | 9/16  | 3/16 | 9394H | 9395H  |        |        |       |
|       |       | 1/4  |       | 9231   | 9238   | 9245   |       |
|       |       | 5/16 |       |        | 9396H  | 9397H  | 9252  |
|       |       | 3/8  |       |        |        | 9398H  | 9399H |
| .625  | 5/8   | 3/16 | 9394J | 9395J  |        |        |       |
|       |       | 1/4  |       | 8324   | 8344   | 8364   |       |
|       |       | 5/16 |       |        | 9396J  | 9397J  | 8384  |
|       |       | 3/8  |       |        |        | 9398J  | 9399J |
| .687  | 11/16 | 3/16 | 9394K | 9395K  |        |        |       |
|       |       | 1/4  |       | 9232   | 9239   | 9246   |       |
|       |       | 5/16 |       |        | 9396K  | 9397K  | 9253  |
|       |       | 3/8  |       |        |        | 9398K  | 9399K |
| .750  | 3/4   | 3/16 | 9394L | 9395L  |        |        |       |
|       |       | 1/4  |       | 8325   | 8345   | 8365   |       |
|       |       | 5/16 |       |        | 9396L  | 9397L  | 8385  |
|       |       | 3/8  |       |        |        | 9398L  | 9399L |
| .812  | 13/16 | 3/16 | 9394M | 9395M  |        |        |       |
|       |       | 1/4  |       | 9233   | 9240   | 9247   |       |
|       |       | 5/16 |       |        | 9396M  | 9397M  | 9254  |
|       |       | 3/8  |       |        |        | 9398M  | 9399M |
| .875  | 7/8   | 3/16 | 9394N | 9395N  |        |        |       |
|       |       | 1/4  |       | 8326   | 8346   | 8366   |       |
|       |       | 5/16 |       |        | 9396N  | 9397N  | 8386  |
|       |       | 3/8  |       |        |        | 9398N  | 9399N |
| .937  | 15/16 | 3/16 | 9394P | 9395P  |        |        |       |
|       |       | 1/4  |       | 9234   | 9241   | 9248   |       |
|       |       | 5/16 |       |        | 9396P  | 9397P  | 9255  |
|       |       | 3/8  |       |        |        | 9398P  | 9399P |
| 1.000 | 1     | 3/16 | 9394Q | 9395Q  |        |        |       |
|       |       | 1/4  |       | 8327   | 8347   | 8367   |       |
|       |       | 5/16 |       |        | 9396Q  | 9397Q  | 8387  |
|       |       | 3/8  |       |        |        | 9398Q  | 9399Q |
| 1.125 | 1-1/8 | 1/4  |       | 8320R  | 8340R  | 8360R  |       |
|       |       | 5/16 |       |        | 9396R  | 9397R  | 8380R |
| 1.250 | 1-1/4 | 1/4  |       | 8328   | 8348   | 8368   |       |
|       |       | 5/16 |       |        | 9396S  | 9397S  | 8388  |
| 1.375 | 1-3/8 | 1/4  |       | 8320T  | 8340T  | 8360T  |       |
|       |       | 5/16 |       |        | 9396T  | 9397T  | 8380T |
| 1.500 | 1-1/2 | 1/4  |       | 8329   | 8349   | 8369   |       |
|       |       | 5/16 |       |        | 9396U  | 9397U  | 8389  |
| 1.625 | 1-5/8 | 1/4  |       | 8320V  | 8340V  | 8360V  |       |
|       |       | 5/16 |       |        | 9396V  | 9397V  | 8380V |
| 1.750 | 1-3/4 | 1/4  |       | 8330   | 8350   | 8370   |       |
|       |       | 5/16 |       |        | 9396W  | 9397W  | 8390  |
| 1.875 | 1-7/8 | 1/4  |       | 8330X  | 8340X  | 8360X  |       |
| 2.000 | 2     | 1/4  |       | 8331   | 8351   | 8371   |       |
|       |       | 5/16 |       |        | 9396Y  | 9397Y  | 8391  |
| 2.250 | 2-1/4 | 1/4  |       | 8320ZA | 8340ZA | 8360ZA |       |
| 2.500 | 2-1/2 |      |       | 8332   | 8352   | 8372   |       |
| 2.750 | 2-3/4 |      |       | 8320ZC | 8340ZC | 8360ZC |       |
| 3.000 | 3     |      |       | 8333   | 8353   | 8373   |       |
| 3.250 | 3-1/4 | 1/4  |       | 8320ZE | 8340ZE | 8360ZE |       |
| 3.500 | 3-1/2 |      |       | 8334   | 8354   | 8374   |       |
| 3.750 | 3-3/4 |      |       | 8320ZG | 8340ZG | 8360ZG |       |

|       |       |     |        |        |        |
|-------|-------|-----|--------|--------|--------|
| 3.250 | 3-1/4 | 1/4 | 8320ZE | 8340ZE | 8360ZE |
| 3.500 | 3-1/2 |     | 8334   | 8354   | 8374   |
| 3.750 | 3-3/4 |     | 8320ZG | 8340ZG | 8360ZG |
| 4.000 | 4     | 1/4 | 8335   | 8355   | 8375   |
| 4.500 | 4-1/2 |     | 8320ZJ | 8340ZJ | 8360ZJ |
| 5.000 | 5     |     | 8320ZK | 8340ZK | 8360ZK |
| 5.500 | 5-1/2 |     | 8320ZL | 8340ZL | 8360ZL |
| 6.000 | 6     |     | 8320ZM | 8340ZM | 8360ZM |

Aluminum Round  
Standoffs table

[home](#) | [about abbatron](#) | [products](#) | [locate distributor or representative](#) | [contact us](#) | [request information](#) | [site map](#)